



Oregon Coordinated Aquatic Bird Monitoring:
Description of Important Aquatic Bird Site



Gerber Reservoir

BCS number: 48-11

Site description author(s)

Whitney Haskell, Data Management Intern, Klamath Bird Observatory
Steve Hayner, Wildlife Biologist, Klamath Falls Resource Area, BLM Lakeview District

Primary contact for this site

Steve Hayner, Wildlife Biologist, Klamath Falls Resource Area, BLM Lakeview District.
Phone: (541) 885-4126. Email: Steve_Hayner@blm.gov

Site location (UTM)

Datum: NAD 83, Zone: 10 Easting: 654386 Northing: 4673675

General description

The Gerber Reservoir consists of a concrete dam and the resulting reservoir. The impoundment is located on Miller Creek.

Boundaries and ownership

Boundaries: Gerber Reservoir is bound in the north by Gerber Road, to the east by CCC Road, and to the south and west by Round Valley Road.

Ownership: The dam is owned and operated by the Bureau of Reclamation (2009). See Figure 1 for BLM Lakeview District ownership map.

Water levels

Focal species use and timing

| Focal Guild/Species | Wintering | Breeding | Migration |
|-----------------------------|------------------|-----------------|------------------|
| Secretive Marsh Birds* | | | |
| Colonial Nesting Waterbirds | | None detected | |
| Ground-based Aquatic Birds | | | |
| Migrating Shorebirds | | | |
| American White Pelican | | | |
| Barrow's Goldeneye | | | |
| Black-necked Stilt | | | |
| Bufflehead | | | |
| Dusky Canada Goose | | | |
| Franklin's Gull | | | |
| Greater Sandhill Crane | | | |
| Long-billed Curlew | | | |
| Snowy Egret | | | |
| Red-Necked Grebe | | | |
| Upland Sandpiper | | | |
| Western Snowy Plover | | | |
| Yellow Rail | | | |

*The focal species for Oregon's secretive marsh bird monitoring are PBGR, LEBI, AMBI, VIRA, SORA, YERA.

Location of Type 1 and 2 habitat within the site*

| Functional Group | Type 1 Habitat | Type 2 Habitat |
|----------------------------|-----------------------|-----------------------|
| Ground Based Aquatic Birds | | |
| Secretive Marsh Birds | None | |
| Colonial Nesters | | |
| Migrating Shorebirds | | |

*See Figure 2 for USFWS National Wetlands Inventory (2009) layer in Google Earth (2009).

Access to Type 1 and Type 2 habitats

See Figure 3 for general road access to the area (Google Map 2009).

Audibility/visibility of focal species

Conservation issues

Conservation measures taken, in progress, or proposed

Past and current surveys

The Klamath Bird Observatory intended to survey the area around Gerber Reservoir in the spring of 2008. Two visits to the site determined that there was no secretive marsh bird habitat in proximity to Gerber Reservoir. Therefore, surveys were not completed.

Potential survey methods

Manning and Hartley (2006) suggest that a ground-based survey for all aquatic birds would be valuable, and might be able to be conducted by volunteers. Whether a migrating shorebird survey, a secretive marshbird survey, and/or a colony survey would be beneficial has yet to be determined.

Potential pilot studies

Literature cited

Bureau of Land Management, Lakeview District ownership map.

<http://www.blm.gov/or/districts/lakeview/images/LakeviewDetailedMap.jpg> .

Accessed March 20, 2009.

Bureau of Reclamation, Gerber Dam. <http://www.usbr.gov/dataweb/dams/or00584.htm> .

Accessed February 2, 2009.

Google Earth version 5.0. 2009. Image: Gerber Reservoir, Oregon. Accessed October 10, 2009.

Google Map. 2009. Map of Gerber Reservoir, Oregon.

<http://maps.google.com/maps?ll=42.204976,-121.10463&z=12&t=h&hl=en>

Accessed March 20, 2009.

Manning, Ann and Laura Hartley. March 2006. Important sites for aquatic birds in Eastern Oregon. Version 2.0.

Figure 1: BLM Lakeview District ownership map. The red box indicates Gerber Reservoir.

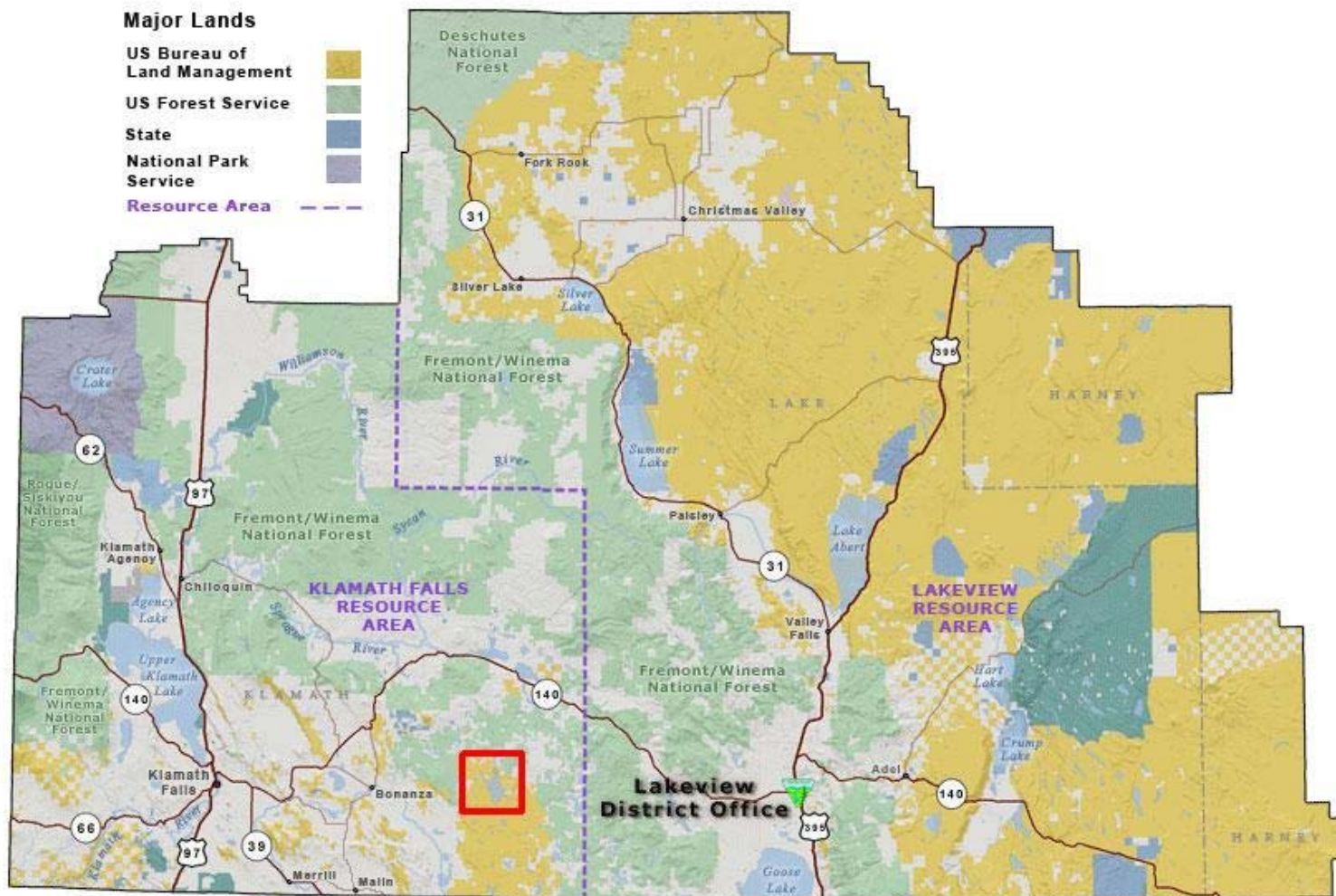


Figure 2: Google Earth (2009) map of Gerber Reservoir with the USFWS National Wetlands Inventory (2009) layer.

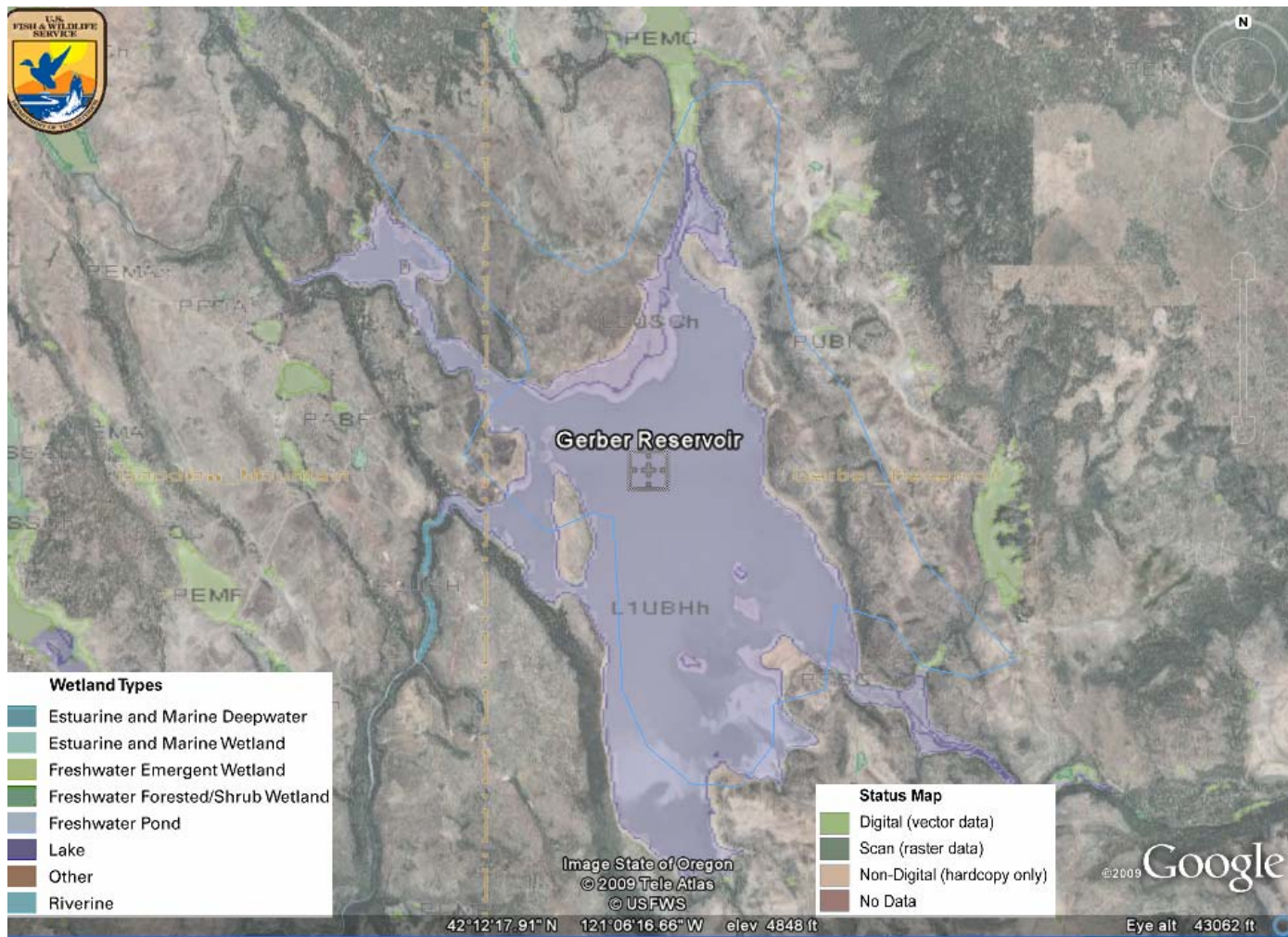


Figure 3: Google Map (© 2009) road view of Gerber Reservoir.

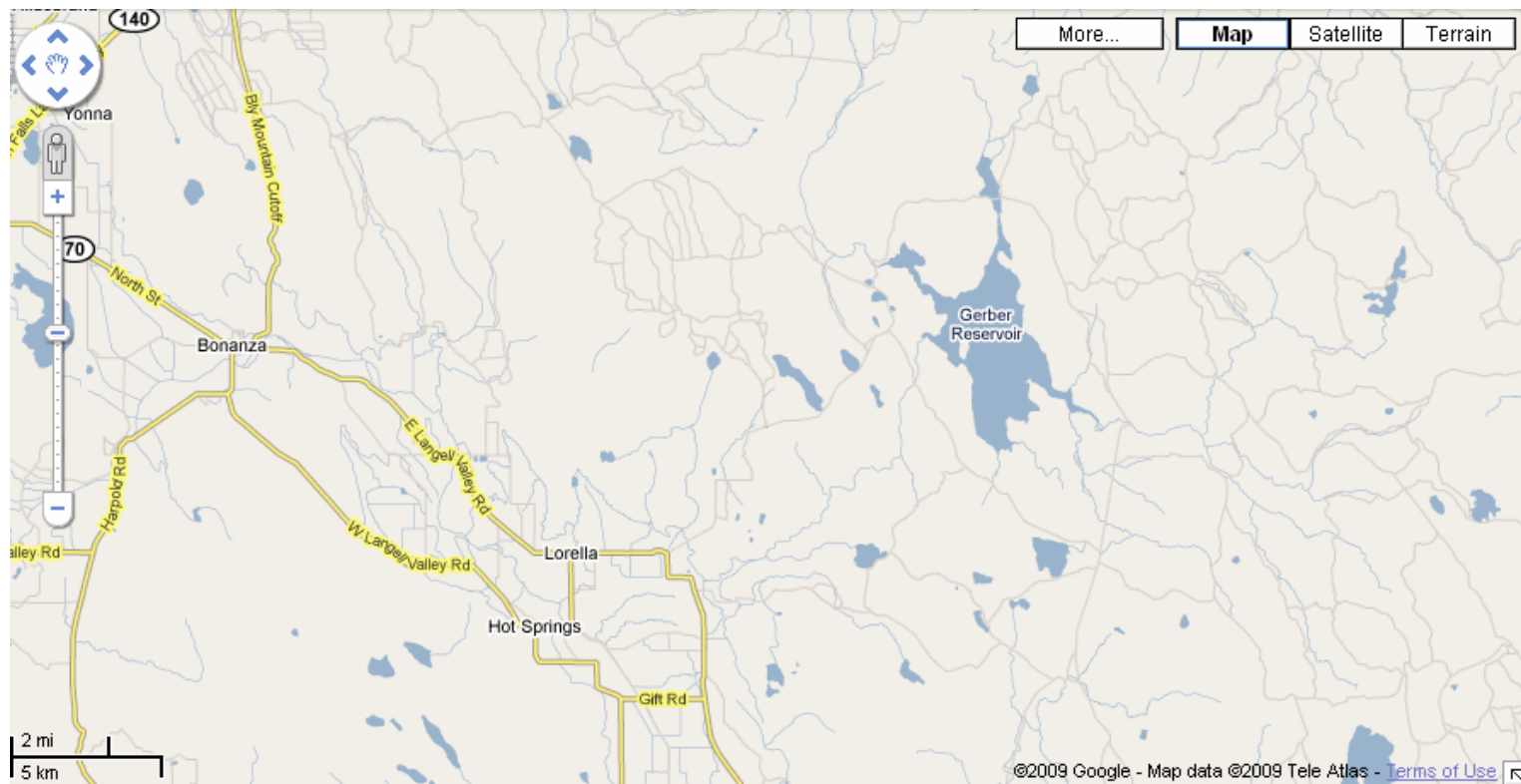


Figure 4: BLM map of Gerber Reservoir, with nest island survey location labeled.

