



Oregon Coordinated Aquatic Bird Monitoring:
Description of Important Aquatic Bird Site



Wickiup Reservoir

BCS number: 48-32

***NOTE: *We were unable to determine all necessary information for this site description. If you would like to contribute the needed information to this description, please contact the Klamath Bird Observatory at kbo@klamathbird.org.*

Site description author(s)

Jennifer Bruce, Research and Monitoring Team Program Manager, Klamath Bird Observatory

Primary contact for site

Site location (UTM)

Datum: NAD 83, Zone: 10, Easting: 601970, Northing: 4836880

General description

Boundaries and ownership

Boundaries:

Ownership: See Figure 1 for BLM Prineville District ownership map.

Water levels

Focal species use and timing

Focal Guild/Species	Wintering	Breeding	Migration
Secretive Marsh Birds*			
Colonial Nesting Waterbirds			
Ground-based Aquatic Birds			
Migrating Shorebirds			
American White Pelican			
Barrow's Goldeneye			
Black-necked Stilt			
Bufflehead			
Dusky Canada Goose			
Franklin's Gull			
Greater Sandhill Crane			
Long-billed Curlew			
Snowy Egret			
Red-Necked Grebe			
Upland Sandpiper			
Western Snowy Plover			
Yellow Rail			

*The focal species for Oregon's secretive marsh bird monitoring are PBGR, LEBI, AMBI, VIRA, SORA, YERA.

Location of Type 1 and 2 habitat within the site*

Functional Group	Type 1 Habitat	Type 2 Habitat
Ground Based Aquatic Birds		
Secretive Marsh Birds		
Colonial Nesters		
Migrating Shorebirds		

* See Figure 2 for USFWS National Wetlands Inventory (2009) layer of Wickiup Reservoir in Google Earth (2009).

Access to Type 1 and Type 2 habitats

See Figure 3 for general road access to the area (Google Map 2009).

Audibility and visibility of focal species

Conservation issues

Conservation measures taken, in progress, or proposed

Past and current surveys

Potential pilot studies

Potential survey methods

a. Description:

b. Selection bias:

c. Measurement error and bias:

Manning and Hartley (2006) suggest that a ground-based survey for all aquatic birds would be valuable, and might be able to be conducted by volunteers. Also, a secretive marshbird survey and a migrating shorebird survey would be valuable, and would probably need to be conducted by staff. Lastly, Manning and Hartley suggest determining survey coverage needed for breeding colonies.

Potential pilot studies

Literature cited

Bureau of Land Management, Prineville District ownership map.

<http://www.blm.gov/or/districts/prineville/images/PrinevilleDetailedMap.jpg> .

Accessed March 20, 2009.

Google Earth version 5.0. 2009. Image: Wickiup Reservoir, Oregon. Accessed May 6, 2009.

Google Map. 2009. Map of Wickiup Reservoir, Oregon.

<http://maps.google.com/maps?ll=43.683452,-121.71748&z=12&t=h&hl=en>

Accessed May 6, 2009.

Manning, Ann and Laura Hartley. March 2006. Important sites for aquatic birds in Eastern Oregon. Version 2.0.

U. S. Fish and Wildlife Service (USFWS). 2008. National Wetlands Inventory website.

U. S. Department of the Interior, Fish and Wildlife Service, Washington, D.C.

<http://www.fws.gov/wetlands/> . Accessed May 6, 2009.

Figure 1: BLM Prineville District ownership map. The red box indicates Wickiup Reservoir.

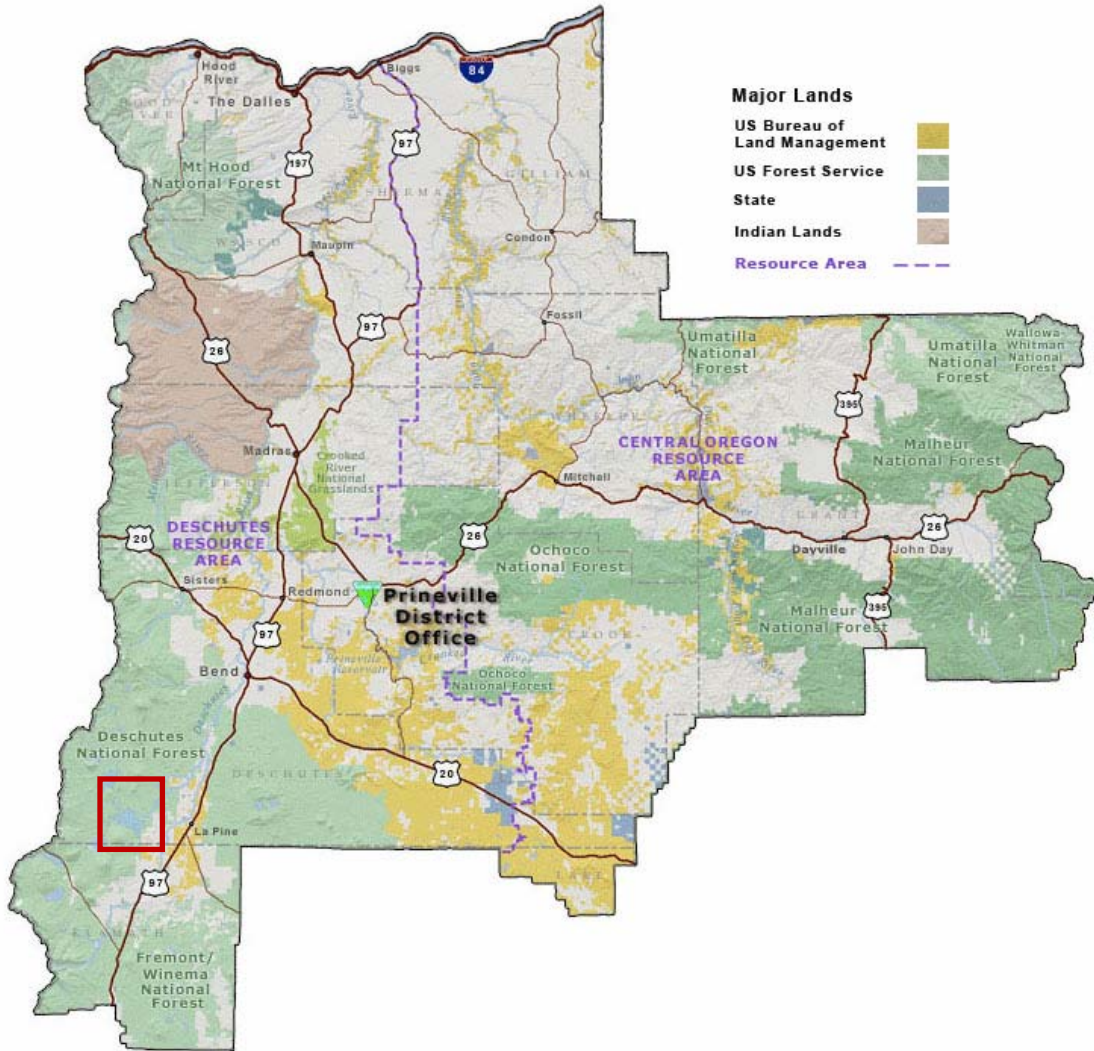


Figure 2: USFWS National Wetlands Inventory (2009) layer of Wickiup Reservoir in Google Earth (2009).

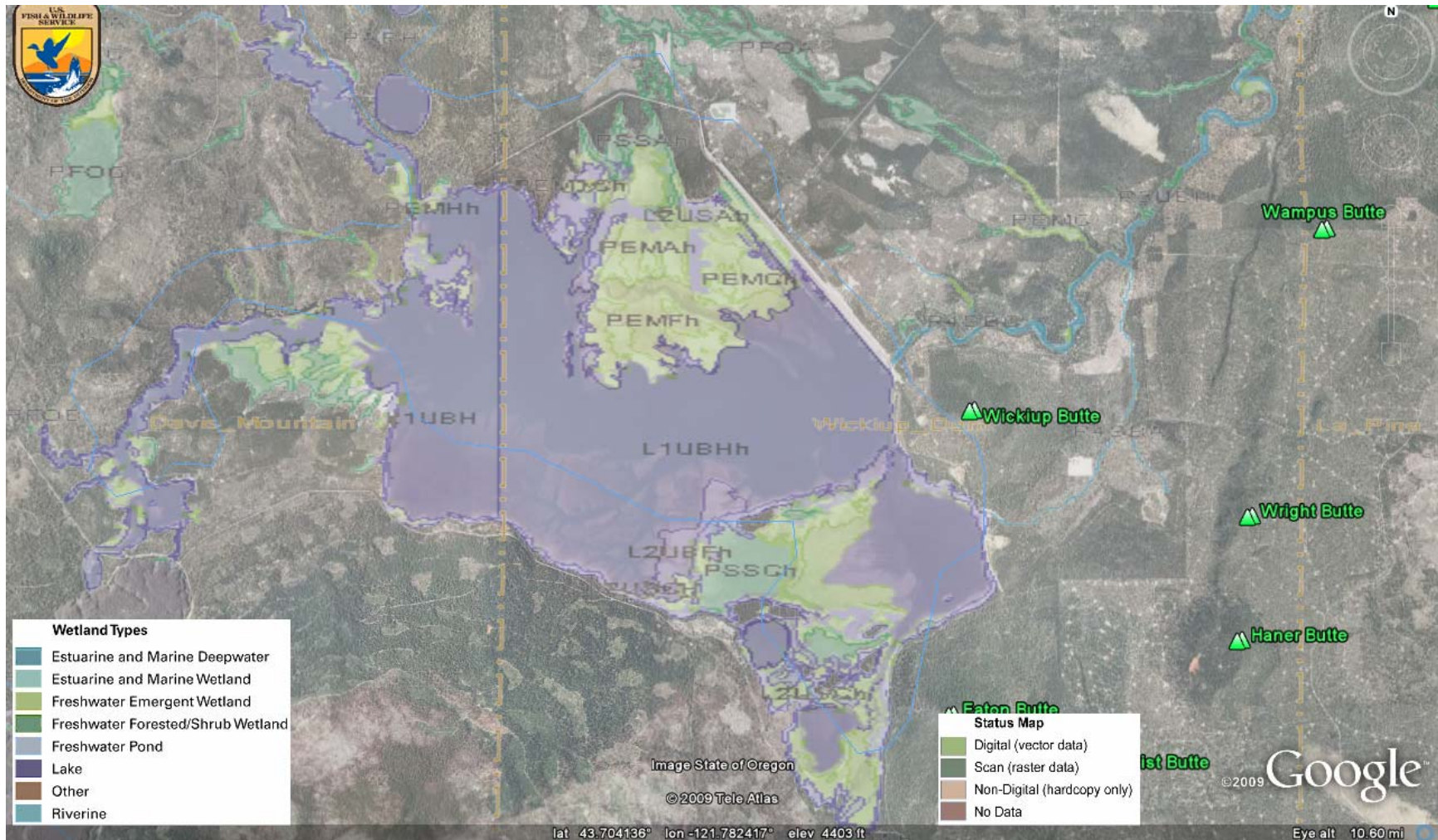


Figure 3: Google Map (2009) road view of Wickiup Reservoir.

