



Oregon Coordinated Aquatic Bird Monitoring:  
Description of Important Aquatic Bird Site



## Catlow Valley

BCS number: 48-5

**\*\*\*NOTE:** *We were unable to determine all necessary information for this site description. If you would like to contribute the needed information to this description, please contact the Klamath Bird Observatory at [kbo@klamathbird.org](mailto:kbo@klamathbird.org).*

### Site description author(s)

Jennifer Bruce, Research and Monitoring Team Program Manager, Klamath Bird Observatory.

### Primary contact for site

### Site location (UTM)

Datum: NAD 83, Zone: 11, Easting: 331134, Northing: 4714407

### General description

See Figure 1 for satellite view of the area (Google Map 2009).

### Boundaries and ownership

*Boundaries:*

*Ownership:* Private. See Figure 2 for BLM Burns District ownership map.

## Water levels

### Focal species use and timing

Focal Guild/Species	Wintering	Breeding	Migration
Secretive Marsh Birds*			
Colonial Nesting Waterbirds			
Ground-based Aquatic Birds			
Migrating Shorebirds			
American White Pelican			
Barrow's Goldeneye			
Black-necked Stilt			
Bufflehead			
Dusky Canada Goose			
Franklin's Gull			
Greater Sandhill Crane			
Long-billed Curlew			
Snowy Egret			
Red-Necked Grebe			
Upland Sandpiper			
Western Snowy Plover			
Yellow Rail			

\*The focal species for Oregon's secretive marsh bird monitoring are PBGR, LEBI, AMBI, VIRA, SORA, YERA.

### Location of Type 1 and 2 habitat within the site

Functional Group	Type 1 Habitat	Type 2 Habitat
Ground Based Aquatic Birds		
Secretive Marsh Birds		
Colonial Nesters		
Migrating Shorebirds		

### Access to Type 1 and Type 2 habitats

See Figure 3 for general road access to the area (Google Map 2009).

### Audibility and visibility of focal species

### Conservation issues

### Conservation measures taken, in progress, or proposed

### Past and current surveys

**Potential pilot studies**

**Potential survey methods**

*a. Description:*

*b. Selection bias:*

*c. Measurement error and bias:*

**Potential pilot studies**

## Literature cited

Bureau of Land Management, Burns District ownership map.  
<http://www.blm.gov/or/districts/burns/images/BurnsDetailedMap.jpg> . Accessed March 20, 2009.

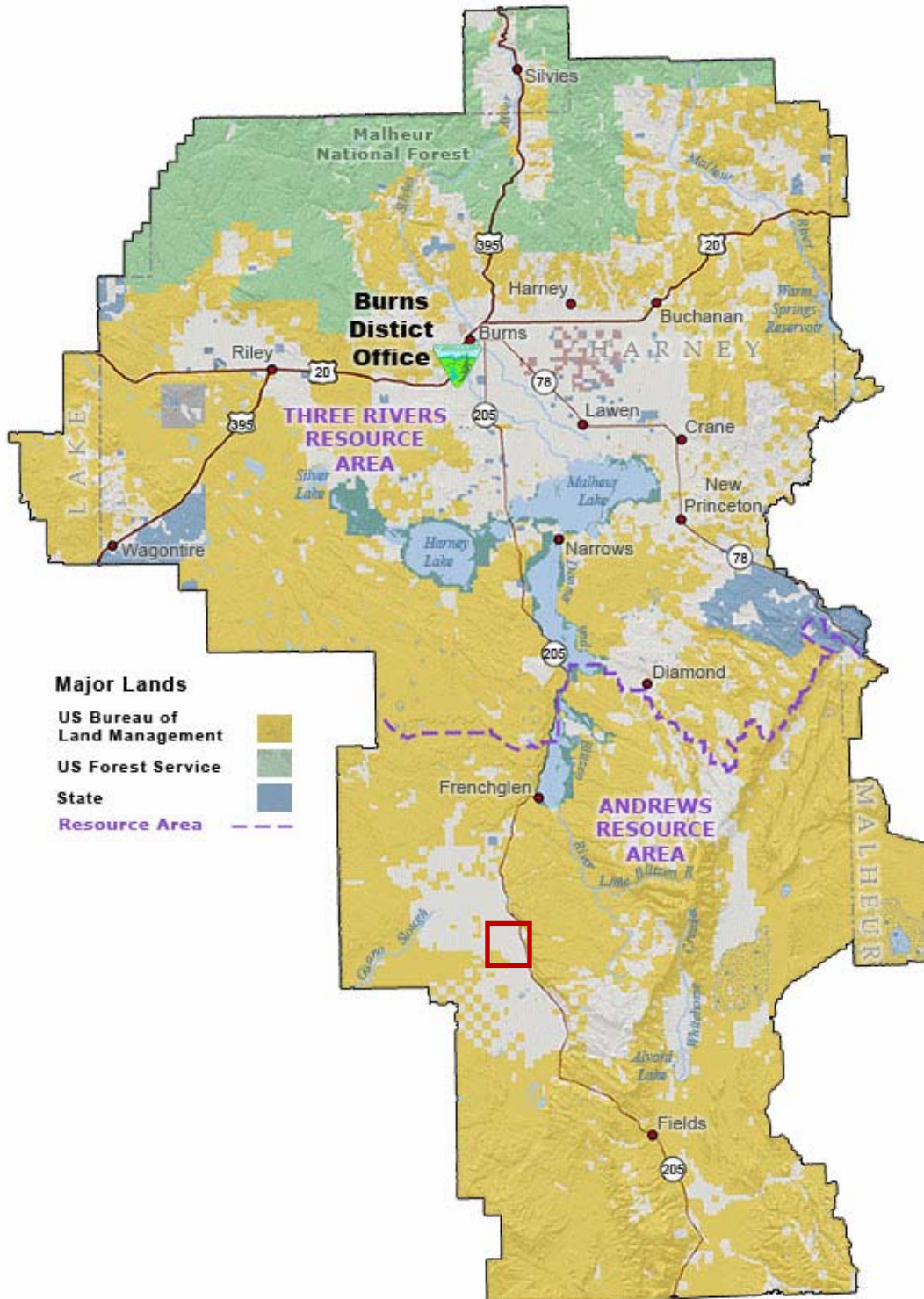
Google Earth version 5.0. 2009. Image: Catlow Valley, Oregon. Accessed May 6, 2009.

Google Map. 2009. Map of Catlow Valley, Oregon.  
<http://maps.google.com/maps?ll=42.563086,-119.05827&z=14&t=h&hl=en>  
Accessed May 6, 2009.

**Figure 1:** Google Earth (2009) map of Catlow Valley.



**Figure 2:** BLM Burns district ownership map. The red box indicates Catlow Valley.



**Figure 3:** Google Map (2009) road view of Catlow Valley.

