



Oregon Coordinated Aquatic Bird Monitoring:
Description of Important Aquatic Bird Site



Aspen Lake

BCS number: 48-3

***NOTE: *We were unable to determine all the necessary information for this site description. If you would like to contribute the needed information to this description, please contact the Klamath Bird Observatory at kbo@klamathbird.org.*

Site description author(s)

Nick David, Aquatic Project Lead, Klamath Bird Observatory
Kate Halstead, Field Technician, Klamath Bird Observatory

Primary contact for this site

Site location (UTM)

Datum: NAD 83, Zone: 10, Easting: 581876, Northing: 4681806

General description

Boundaries and ownership

Boundaries: The boundaries of Aspen Lake are directly east of West Aspen Road, southwest of Aspen Lake Road, and west of Round Lake Road and North Branch Road.

Ownership: Jeld-Wen Corporation of Klamath Falls, see Figure 1 for BLM Lakeview District ownership map.

Water levels

Focal species use and timing

Focal Guild/Species	Wintering	Breeding	Migration
Secretive Marsh Birds*		Present	
Colonial Nesting Waterbirds			
Ground-based Aquatic Birds			
Migrating Shorebirds			
American White Pelican			
Barrow's Goldeneye			
Black-necked Stilt			
Bufflehead			
Dusky Canada Goose			
Franklin's Gull			
Greater Sandhill Crane		Present	
Long-billed Curlew		Present	
Snowy Egret		Present	
Red-Necked Grebe			
Upland Sandpiper			
Western Snowy Plover			
Yellow Rail			

*The focal species for Oregon's secretive marsh bird monitoring are PBGR, LEBI, AMBI, VIRA, SORA, YERA.

Location and use of Type 1 and Type 2 habitats within site*

Functional Group	Type 1 Habitat	Type 2 Habitat
Large Waders	Perimeter of lake	Wet meadows
Secretive Marsh Birds	Emergent vegetation	Perimeter of lake
Gulls and Terns	Emergent vegetation, open water	Perimeter of Lake
Waterfowl	Open water	Perimeter of lake

*See Figure 2 for USFWS National Wetlands Inventory (2008) layer in Google Earth (2008).

Access to Type 1 and Type 2 habitats

West Aspen Rd, which encircles most of the lake, is 99% passable by 4WD vehicle and is the best option to access the lake's perimeter. Emergent vegetation is best reached by kayak/canoe especially during the wettest part of the year when open water surrounds the lake's interior emergent vegetation. Wet meadows are also accessible from the road. Overall access to this area is very good if a 4WD vehicle and a canoe are available. See Figure 3 for general road access to the area (Google Map 2009).

Audibility/visibility of focal species

This area is extremely remote and therefore has excellent audibility of focal species. Visibility is also good for flying birds as there are no trees or other obstructions to inhibit this. Visibility of birds on the water may be problematic, due to dense reeds and grasses over most of the lake. Large waders are also readily visible in wet meadow areas and along the shore.

Conservation issues

There has been increased sedimentation due to extensive logging in the hills east of the lake.

Conservation measures taken, in progress, or proposed

Past and current surveys

Klamath Bird Observatory (KBO) conducted Black Tern surveys at Aspen Lake during the breeding seasons of 1997 through 2004. Surveys were discontinued due to low numbers of birds and difficulty accessing the area because of poor road quality.

In 2008, KBO surveyed for six focal secretive marsh bird species (Pied-billed Grebe, American Bittern, Least Bittern, Yellow Rail, Sora, and Virginia Rail) during peak breeding season (May and June). Pied-billed Grebes were found in abundance, and several American Bittern and Virginia Rail were detected.

Potential survey methods

Reinstitution of Black Tern surveys would be valuable to understand population trends since the last surveys were completed. Aerial surveys of other aquatic birds would be useful near the center of the marsh where vegetation is too dense for a canoe.

A ground-based survey for all aquatic birds would be valuable. Manning and Hartley (2006) suggest that such a survey might be able to be conducted by volunteers.

Pilot studies needed

A protocol is needed for aerial surveys of marsh birds and wading birds.

Literature cited

- Bureau of Land Management. Lakeview District.
<http://www.blm.gov/or/districts/lakeview/index.php>. Accessed October 10, 2008.
- Bureau of Land Management, Lakeview District ownership map.
<http://www.blm.gov/or/districts/lakeview/images/LakeviewDetailedMap.jpg> .
Accessed March 20, 2009.
- Bureau of Land Management, Burns District ownership map.
<http://www.blm.gov/or/districts/burns/images/BurnsDetailedMap.jpg> . Accessed
March 20, 2009.
- Google Earth version 4.3. 2008. Image: Aspen Lake, Oregon. Accessed October 10,
2008.
- Google Map. 2009. Map of Aspen Lake, Oregon.
<http://maps.google.com/maps?ll=42.275305,-122.01225&z=13&t=h&hl=en>.
Accessed March 20, 2009.
- Manning, Ann and Laura Hartley. March 2006. Important sites for aquatic birds in
Eastern Oregon. Version 2.0.
- U. S. Fish and Wildlife Service (USFWS). 2008. National Wetlands Inventory website.
U. S. Department of the Interior, Fish and Wildlife Service, Washington, D.C.
<http://www.fws.gov/wetlands/>. Accessed October 10, 2008.

Figure 1: BLM Lakeview District ownership map. The red box indicates Aspen Lake.

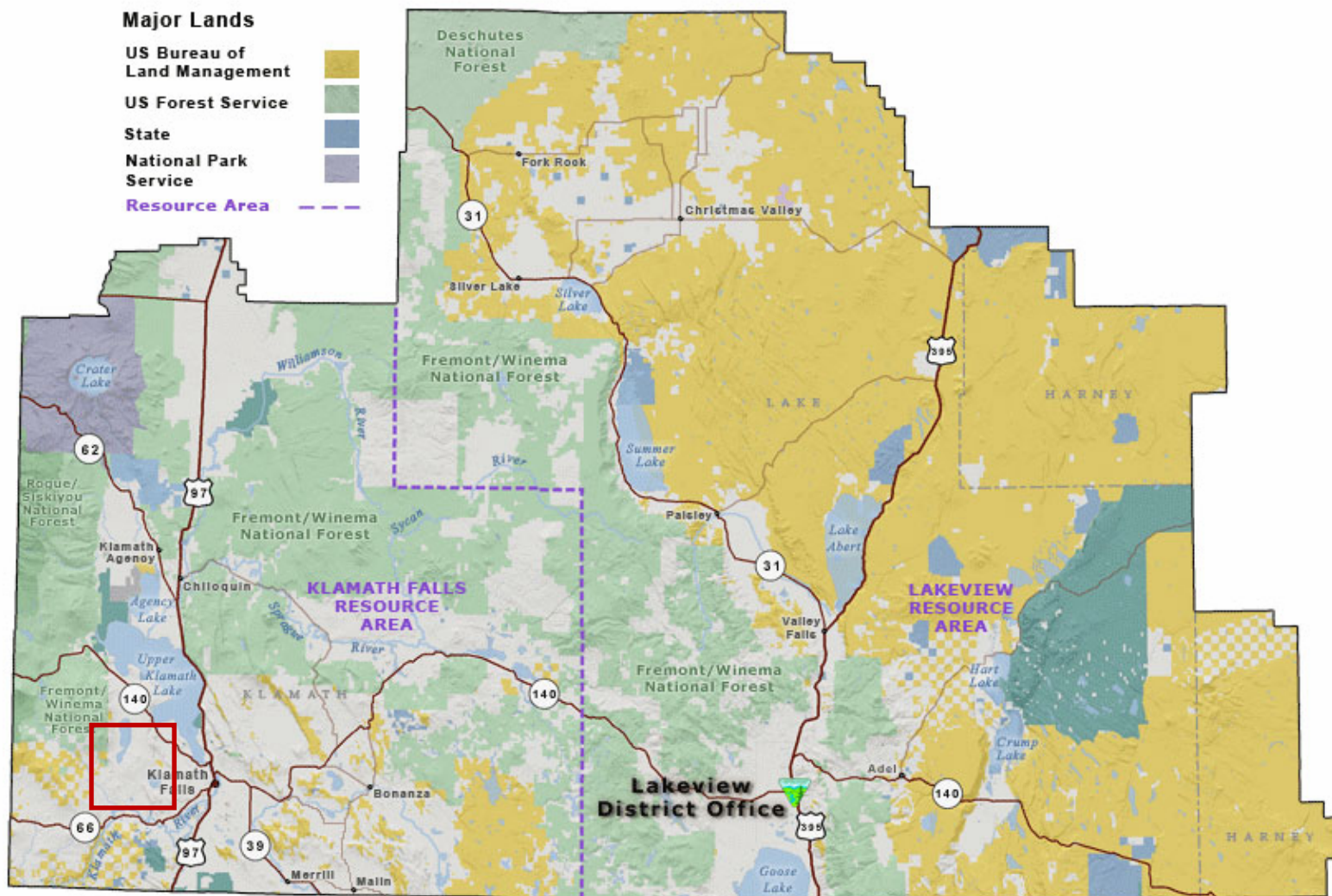


Figure 2: Google Earth (2008) map of Aspen Lake with the USFWS National Wetlands Inventory (2008) layer.

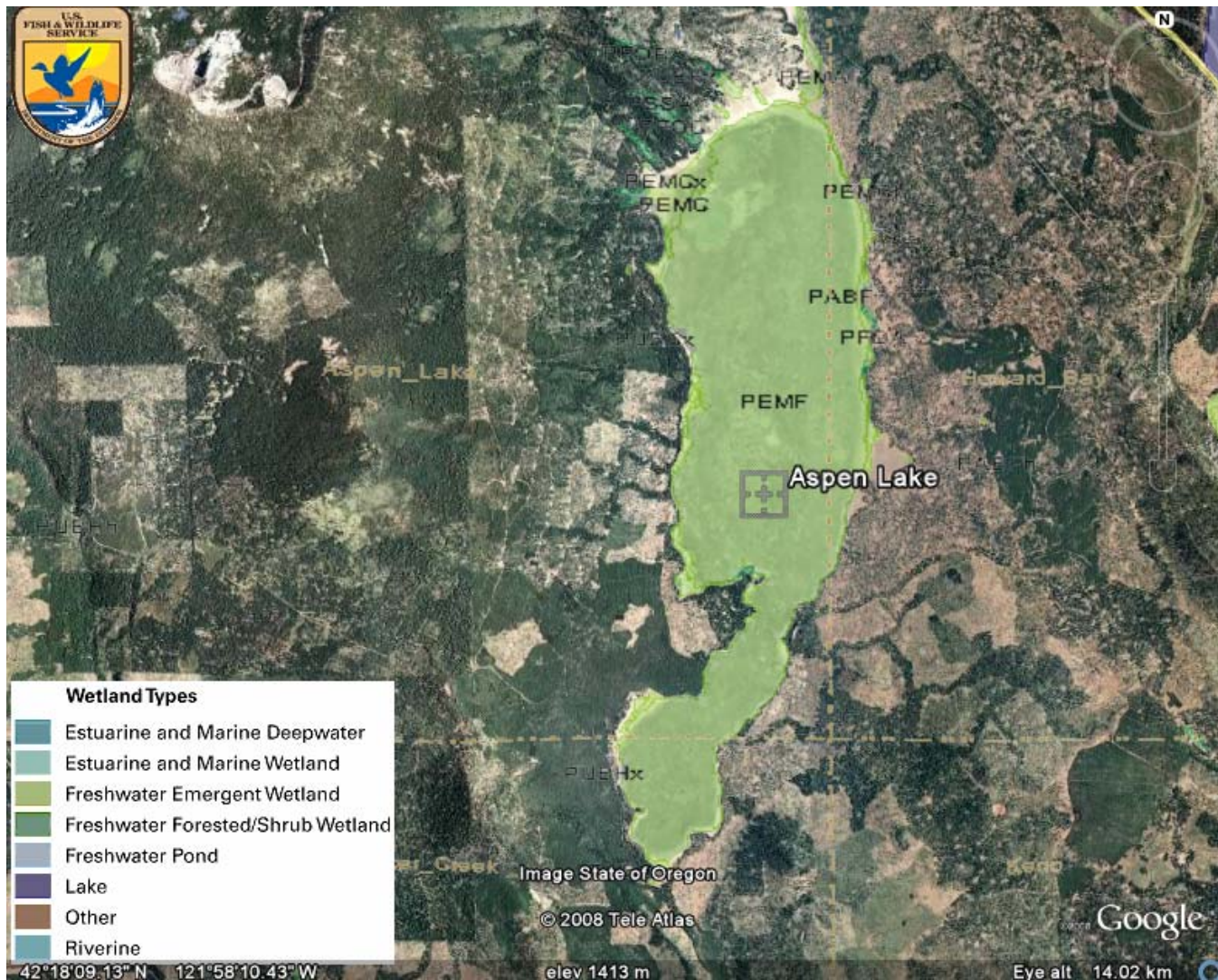


Figure 3: Google Map (2009) road view of Aspen Lake.

