



Oregon Coordinated Aquatic Bird Monitoring:
Description of Important Aquatic Bird Site



Blue Mountains

BCS number: 49-2

***NOTE: *We were unable to determine all necessary information for this site description. If you would like to contribute the needed information to this description, please contact the Klamath Bird Observatory at kbo@klamathbird.org.*

Site description author(s)

Primary contact for site

Site location (UTM)

Datum: NAD 83, Zone: 11, Easting: 421852, Northing: 5039014

General description

See Figure 1 for satellite view of the area (Google Earth 2009).

Boundaries and ownership

Boundaries:

Ownership: See Figure 2 for Bureau of Land Management (BLM) Vale District Ownership map.

Water levels

Focal species use and timing

Focal Guild/Species	Wintering	Breeding	Migration
Secretive Marsh Birds*			
Colonial Nesting Waterbirds			
Ground-based Aquatic Birds			
Migrating Shorebirds			
American White Pelican			
Barrow's Goldeneye			
Black-necked Stilt			
Bufflehead			
Dusky Canada Goose			
Franklin's Gull			
Greater Sandhill Crane			
Long-billed Curlew			
Snowy Egret			
Red-Necked Grebe			
Upland Sandpiper			
Western Snowy Plover			
Yellow Rail			

*The focal species for Oregon's secretive marsh bird monitoring are PBGR, LEBI, AMBI, VIRA, SORA, YERA.

Location of Type 1 and 2 habitat within the site

Functional Group	Type 1 Habitat	Type 2 Habitat
Ground Based Aquatic Birds		
Secretive Marsh Birds		
Colonial Nesters		
Migrating Shorebirds		

Access to Type 1 and Type 2 habitats

See Figure 3 for general road access to the area (Google Map 2009).

Audibility and visibility of focal species

Conservation issues

Conservation measures taken, in progress, or proposed

Past and current surveys

Potential pilot studies

Potential survey methods

a. Description:

b. Selection bias:

c. Measurement error and bias:

Manning and Hartley (2006) suggest determining whether aerial surveys for waterfowl, a secretive marshbird survey, and/or a colony survey would be beneficial.

Potential pilot studies

Literature cited

Bureau of Land Management, Vale District ownership map.

<http://www.blm.gov/or/districts/vale/images/ValeDetailedMap.jpg> . Accessed March 20, 2009.

Google Earth version 5.0. 2009. Image: Blue Mountains, Oregon. Accessed May 6, 2009.

Google Map. 2009. Map of Blue Mountains, Oregon.

<http://maps.google.com/maps?ll=45.516559,-118.07794&z=11&t=h&hl=en>.
Accessed May 6, 2009.

Manning, Ann and Laura Hartley. March 2006. Important sites for aquatic birds in Eastern Oregon. Version 2.0.

Figure 1: Google Earth (2009) map of Blue Mountains.

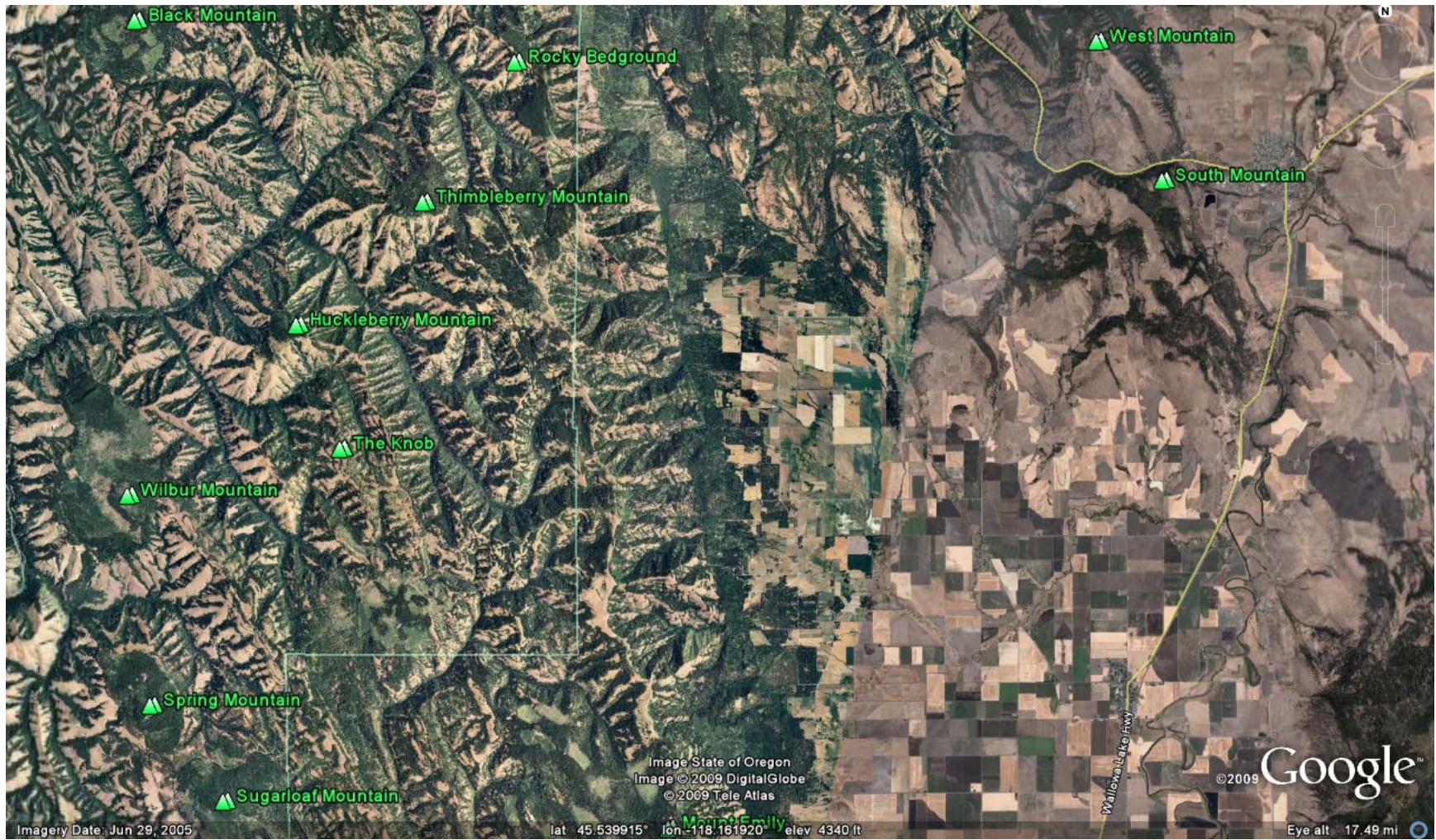


Figure 2: BLM Vale District ownership map. The red box indicates the Blue Mountains.

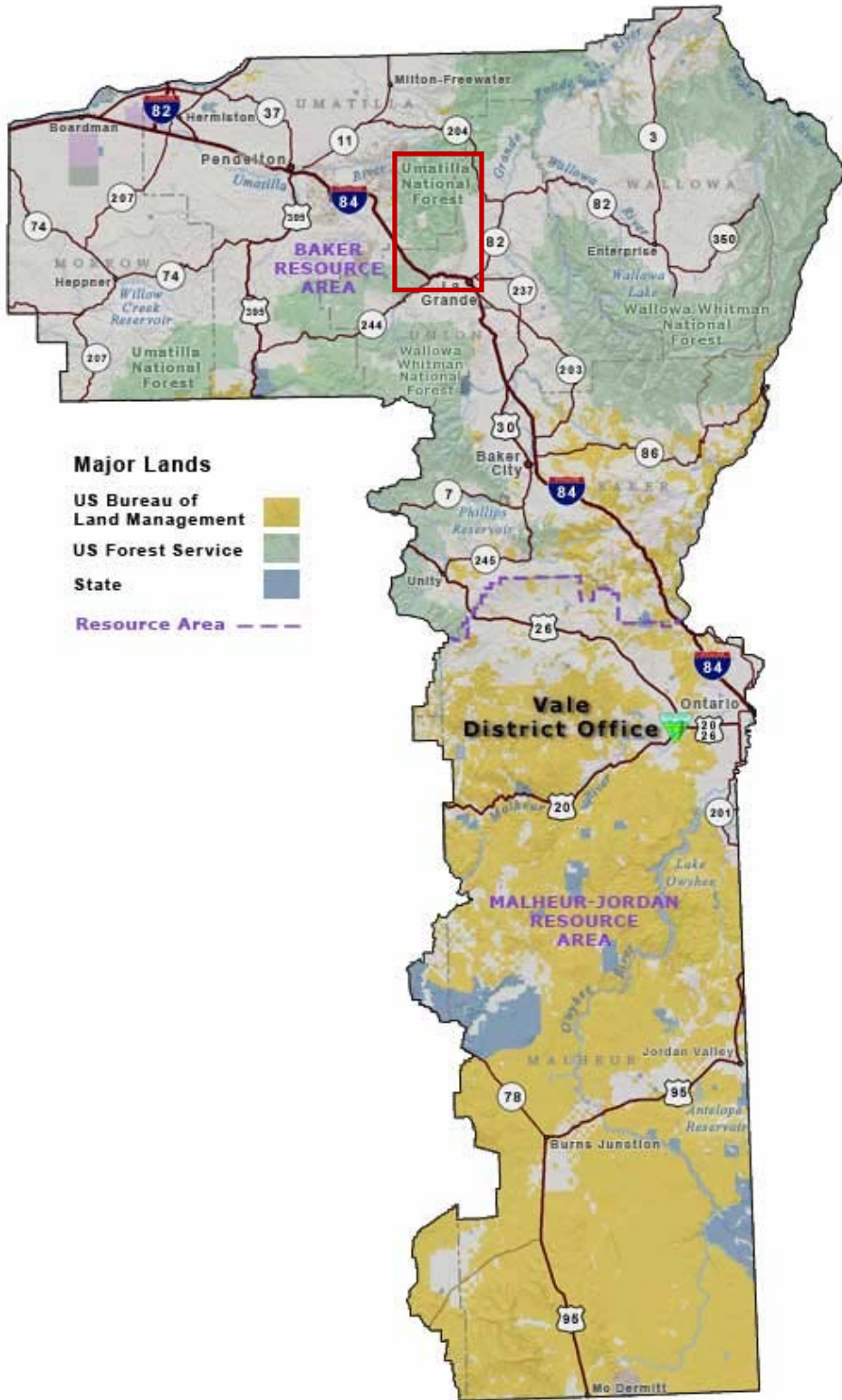


Figure 3: Google Map (2009) road view around Blue Mountains.

